



WHERE EVERYTHING INSPIRES!

ACHIEVOR

The classic, elegant and elite partner for high performance
and successful achievers like you!





The desire to achieve, we are together.

Each day is a new life.

Seize it. Live it.

Coming together is a beginning;
keeping together is progress;
working together is success.



ACHIEVOR

Combining strong aesthetics, ergonomically designed with maximum comfort, **ACHIEVOR** is an intuitive chair that can be easily adjusted to suit the high professional achievers with a passion for both work and quality of life.

ACHIEVOR, the super-suave new range of office chair, is now available in a choice of leather and fabric to suit and enhance your office's existing design scheme. Irrespective of your own shape or size, **ACHIEVOR** is a level of comfort, charm and performance unavailable for this class of product.

ACHIEVOR – the classic, elegant and elite chair for high performance and successful achievers like you !





**Keeping
together...**

**Working
Together!**



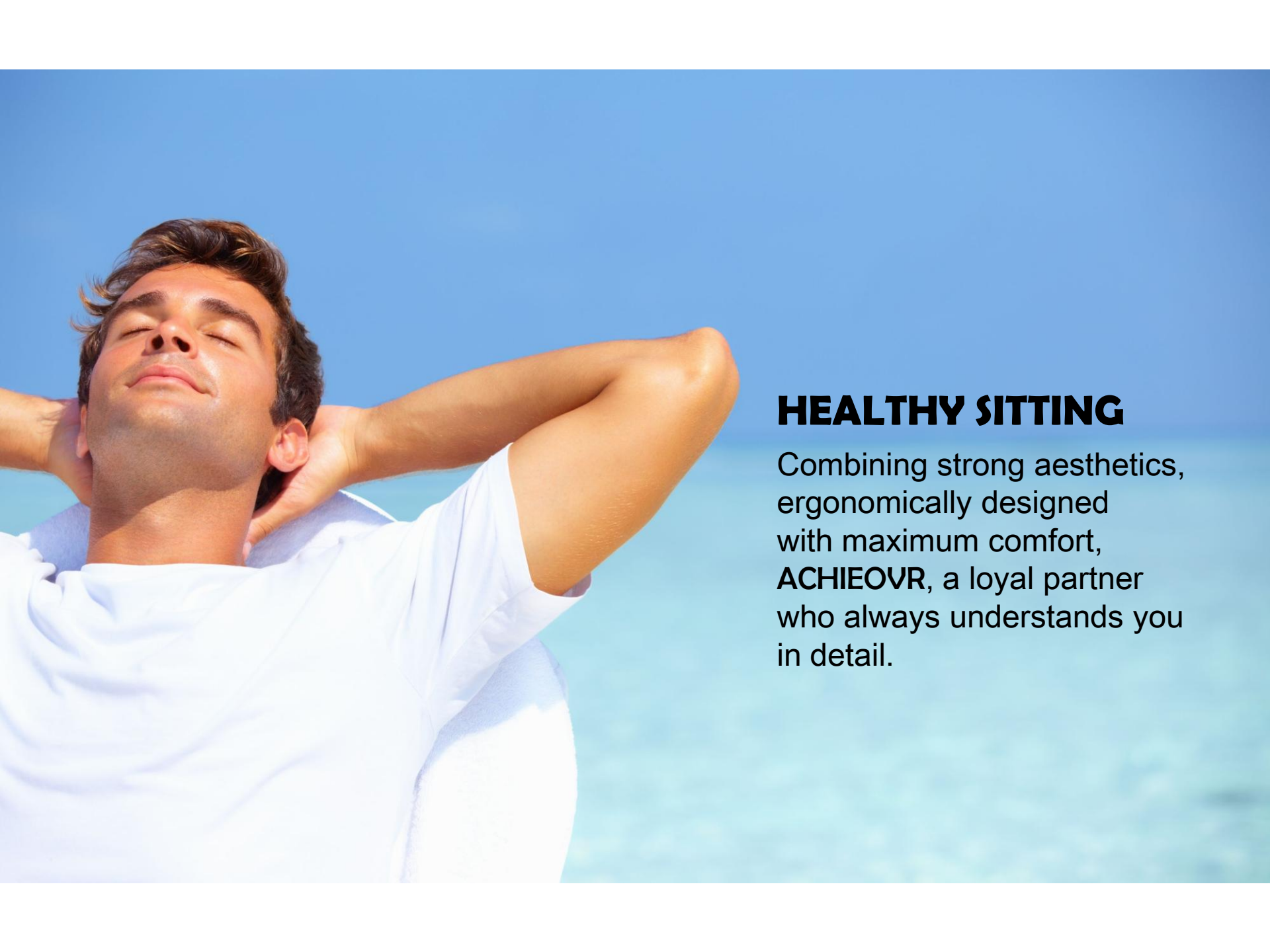
Understanding is the only thing.

A chair, your partner, should understand you - Just like the tacit understanding between the rider and the horse.

People vary widely in all our dimensions. Improperly fitted chairs can cause discomfort and contribute to health problems.

ACHIEVOR, your partner, provides the perfect personal fit for your body shape, your curve. That's for you, your daily healthy sitting - Turning working into a joy and not a chore!





HEALTHY SITTING

Combining strong aesthetics, ergonomically designed with maximum comfort, **ACHIEOVR**, a loyal partner who always understands you in detail.

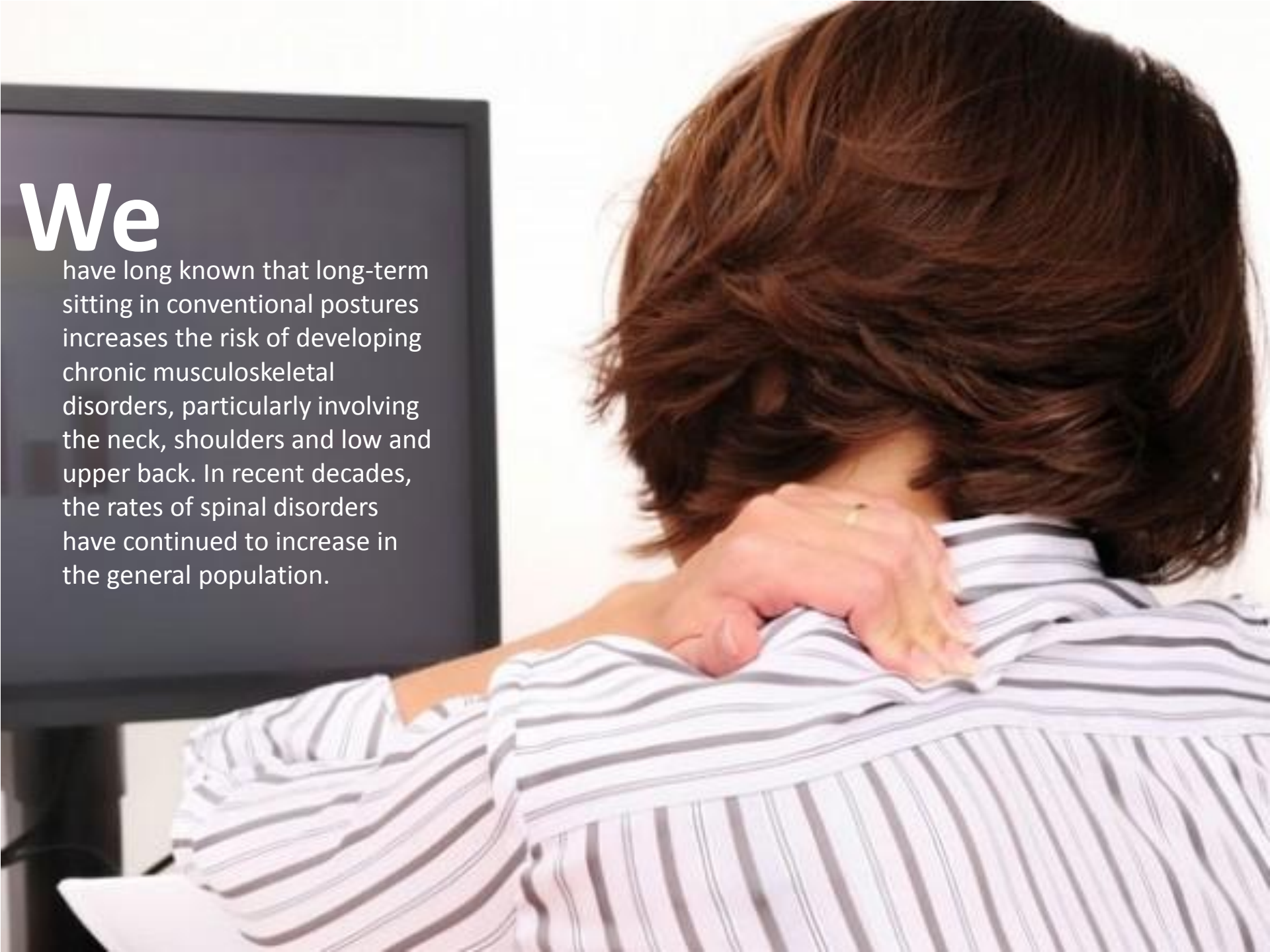


In

our everyday lives at work, we sit for most hours of the day. Thus, a proper and healthy chair is important and essential. This in turn leads to better health and productivity. Ergonomic seating can be defined as a comfortable working posture with a natural alignment of all your joints from head to toes which reduces the stress and strain on the lower back, especially our five large vertebrae (L1-L5).

We

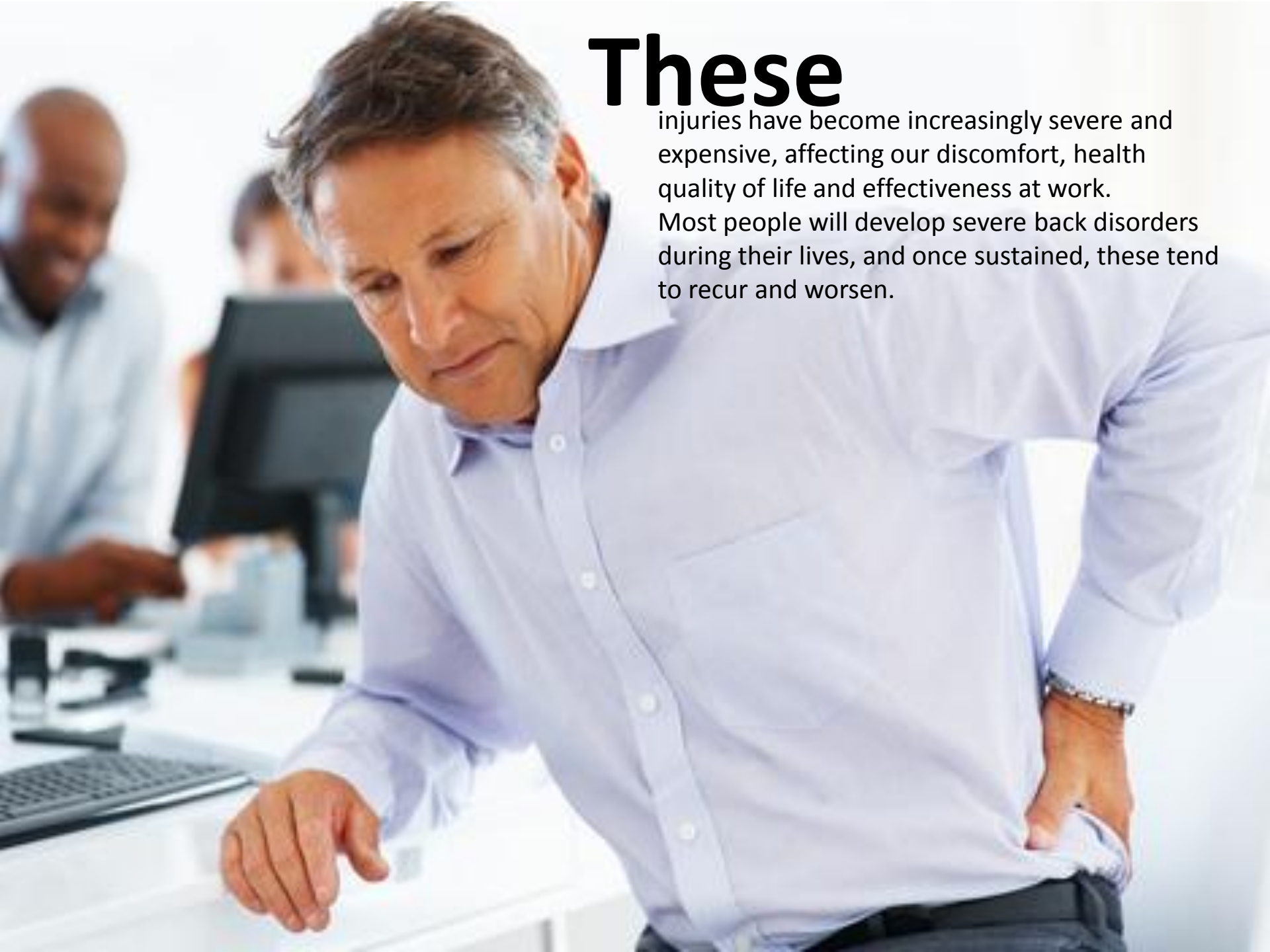
have long known that long-term sitting in conventional postures increases the risk of developing chronic musculoskeletal disorders, particularly involving the neck, shoulders and low and upper back. In recent decades, the rates of spinal disorders have continued to increase in the general population.



These

injuries have become increasingly severe and expensive, affecting our discomfort, health quality of life and effectiveness at work.

Most people will develop severe back disorders during their lives, and once sustained, these tend to recur and worsen.



Musculoskeletal Disorders

Neck Pain



Shoulder Pain



Back Pain





As

we know, our body design is for hunting and fishing as well for dynamic static. Therefore, the design of chair should be in dynamically to avoid any illness happened especially headache and sore neck; muscles inactive and sore shoulders, back pain and constricted stomach.

Therefore, "Ergonomic Theory" shall integrate into the chair design process in order to prevent the above potential body illness. ACHIEVOR is designed by OASIS to serve this purpose.

ACHIEVOR design process is assisted with collaboration from honorable **Dr. Jalaluddin Dahalan**, Malaysia's leading Ergonomist & OSH Consultant, Ergoworks Sdn Bhd.



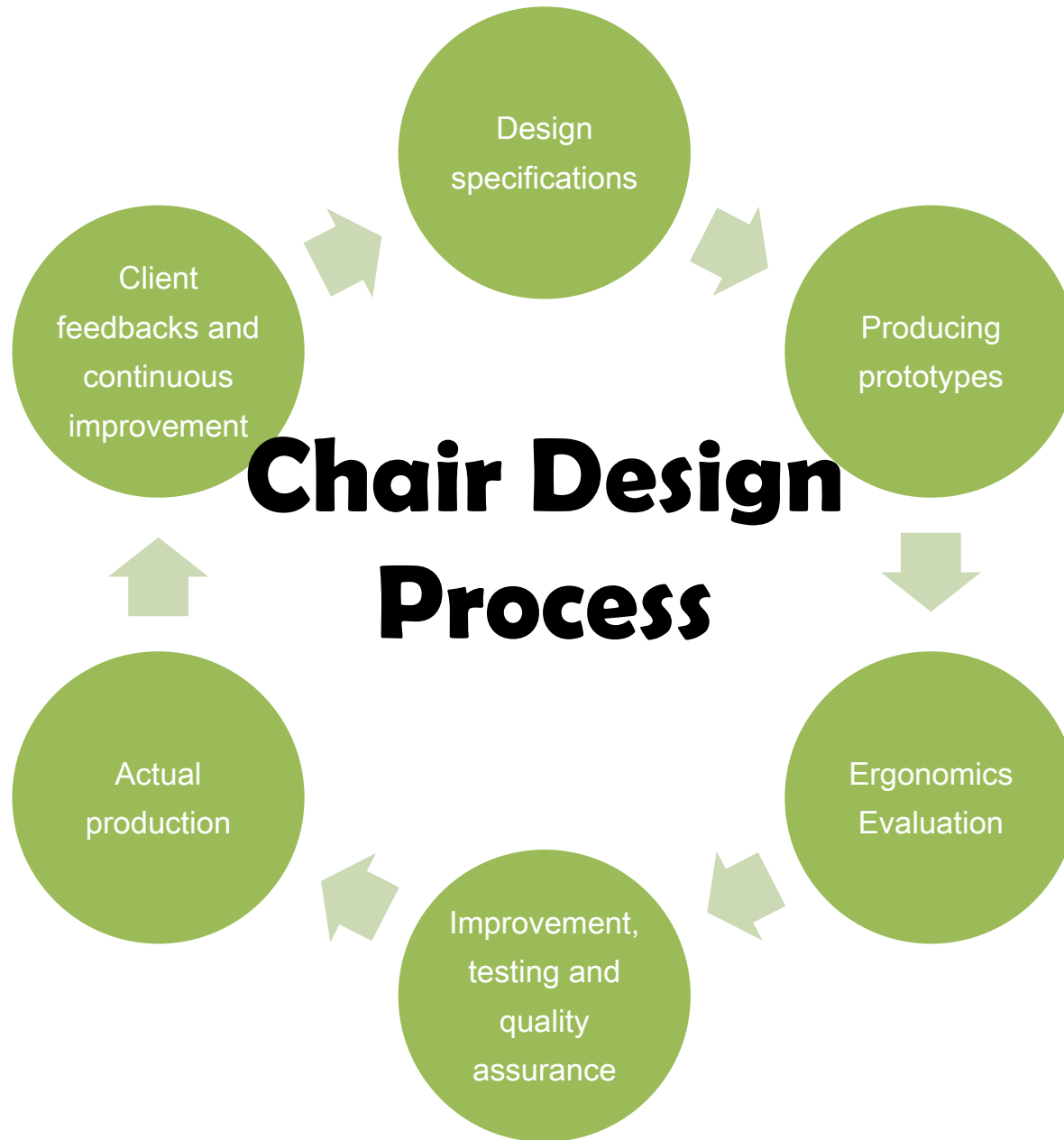
Dr. Jalaluddin Dahalan

was the division manager of the National Institute of Occupational Health when he did a research in 2000, which was funded by a Japanese international corporation. In the course of his research, he found out that many people complain of lower back, neck and shoulder pain due to long hours of sitting. His research showed that prolonged hours of sitting would increase the chances of getting back injuries, fatigue and discomfort. The solution to this is to have chairs designed with proper back support.

In the collaboration with Dr. Jalaluddin, Oasis aims to design a chair that is highly adjustable and suitable for the majority of the population. Besides the seat pan, the lumbar supports and height of the chair should be adjustable to fit as many users as possible. A proper support for the back and neck ease strains on our muscles. "This is why technology is important," said Dr. Jalaluddin. He believes that in order to produce a good chair, investment in Research & Development is necessary. With a good design, the chair will prevent the user from getting back injuries.

Oasis Health & Wellness Design Group is honorably to have the chance again to cooperate in the process of ACHIEVOR design development; and by the consultations from Doctor, Oasis group is able to develop a chair suitable for majority population.

With the collaboration with **Dr. Jalaluddin Dahalan...**



With the collaboration with **Dr. Jalaluddin Dahalan...**

Ergonomics Evaluation

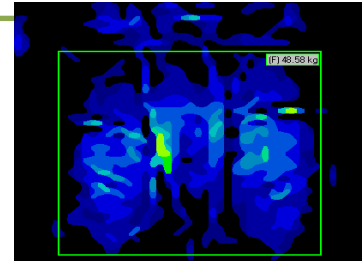
Body size study

- 2-D anthropometric study
- 3-D anthropometric testing



Chair shape

- Pressure testing
- Contact stress study



Usability

- Usability testing
- Range of Adjustability
- Ease of use
- Comfort



Have your own ERGONOMIC CHAIR!!

Your best Partner, **ACHIEVOR.**

ACHIEVOR, the latest product from our super-suave new range of office chairs is designed and developed to fit 90% of the majority population. It features a variable seat height adjustment to support the Natural S-curve of your spine to prevent back pain and provides good lower back.



Back Height Adjustment

Flat bar ratchet system can adjust back height easily while sitting.

Arm Width Adjustment

- Arm width adjustment is designed for difference body shape.

- Pull up the lever to lock, push down the lever to unlock.

Seat Height Adjustment & Sliding Function

1. Lift right-hand lever up to adjust the seat height without sitting on the chair. To lower seat height, lift right-hand lever up while sitting.

2. Pull up the small lever to adjust the seat depth to provide a personal ergonomics comfort for individual with different upper leg length.

4 Direction Adjustment Armrest

Provide the arm to rest comfortably at different required position.

Lumbar Forward & Backward Adjustable

Dial-up adjustable lumbar support provides perfect spinal and seating posture.

Automatic Weight Adjustment Synchron Mechanism

- Automatic weight adjustment mechanism to suit different body weight automatically.

- Push forward the left-hand lever to lock the seat position.

- Pull backward the lever to unlock.

- Chair seat will lift up perpendicular when tilting. This allows the pelvis to remain stable and overall posture to stay in a positive position.





WHERE EVERYTHING INSPIRES!

ACHIEVOR

Happiness is the quality of life everyone wishes to attain.
Enjoy life, be happy, with ACHIEVOR.



Health & Wellness Design Group



Our products are manufactured under stringent quality controls and is recipient of ISO 9001:2008 Quality Assurance and bestowed with Japan Good Design Mark by Japan Industrial Design Promotion Organization (JIDPO) and Malaysia Good Design Mark by Malaysia Design Council (MDC) for its innovative designs of its products.

*With the constant upgrading of products, BUROSC reserves the right to make appropriate changes of specification without any prior notice.

Manufactured by:

OASIS FURNITURE INDUSTRIES SDN. BHD.
No. 2 & 3, Jalan Perindustrian Gemilang,
Taman Perindustrian Gemilang,
Batu 4 Jalan Mersing, 86000 Kluang,
Johor, Malaysia.

Website: www.burosc.com

Email: burosc@oasis.com.my

Tel: +607-7733292 Fax: +607-7739181